



Specification

| Model | MVFA-230 | MVFA-231 | MVFA-240 |
|--------------------------|------------------------|--------------|--------------|
| Bore No. | 8A | | |
| Port size | 1/4 | | |
| No. of port | 3 | 4 | |
| No. of position | 2 | | |
| Medium | Air | | |
| Operating pressure range | 0.2~0.7 MPa | | |
| Proof pressure | 1 MPa | | |
| Effective orifice | 8 mm ² | | |
| Ambient temperature | -5~+60°C (No freezing) | | |
| Weight (with protection) | 684 (1426) g | 739 (1481) g | 774 (1516) g |

Order example

MVFA — 230 — 8A — PL — G

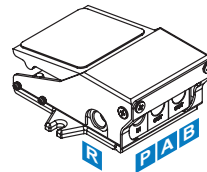
MODEL

230: 3/2 NC
231: 3/2 NO
240: 4/2

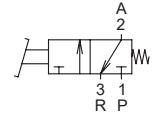
8A: 1/4

P: With protection
L: With lock

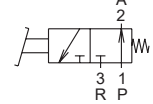
PORT THREAD
Blank: Rc thread
G: G thread
NPT: NPT thread



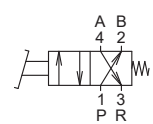
MVFA-230
N.C.



MVFA-231
N.O.



MVFA-240

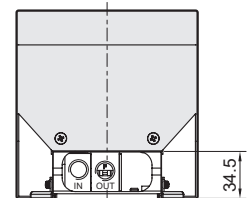
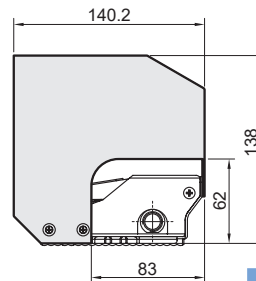
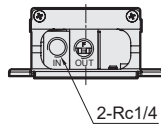
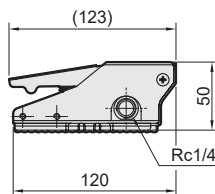
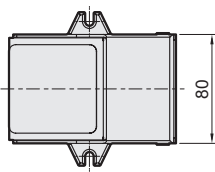


MVFA-230-8A-(L)

MVFA-231-8A-(L)

MVFA-230-8A-P(L)

MVFA-231-8A-P(L)



MVFA-240-8A-(L)

MVFA-240-8A-P(L)

