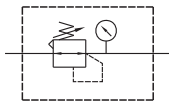


# MAR100 series

## PRESSURE REGULATOR



### Symbol



### Specification

Model	MAR100
Port size	M5×0.8
Medium	Air
Max. operating pressure	1 MPa
Proof pressure	1.5 MPa
Regulated pressure range	0.05~0.7 MPa
Repeatability	±10% F.S.
Ambient temperature	-5~+60°C (No freezing)
Flow rate (*)	90 ℓ/min
Attachment	Pressure gauge (PG-25), bracket
Weight	100g

\* Measured at primary pressure 0.7 MPa, secondary pressure 0.6 MPa and pressure drop 0.1 MPa.

### Order example

MAR100 — M5 — B — C □

MODEL

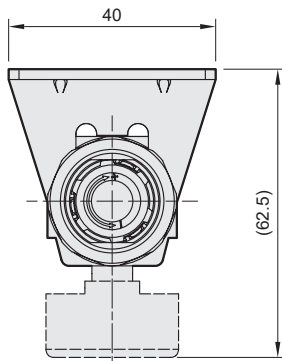
PORT SIZE

BRACKET

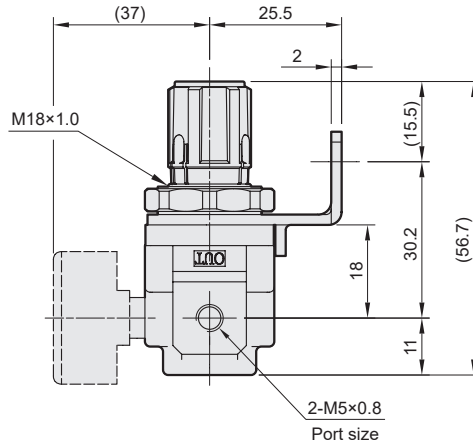
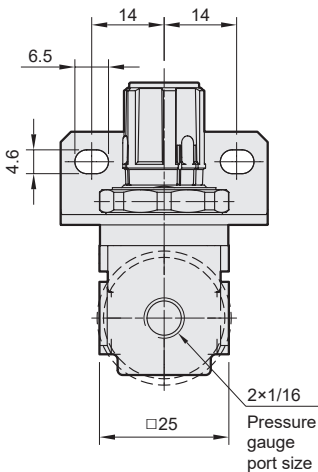
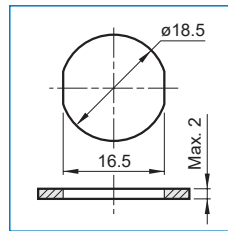
PRESSURE GAUGE

FLOW DIRECTION

Blank: Left to right  
R: Right to left

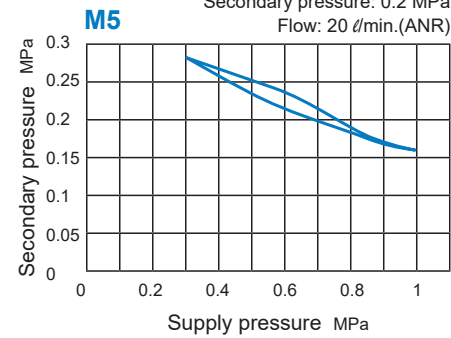


### Panel mounting hole



### Pressure characteristics

Supply pressure: 0.7 MPa  
Secondary pressure: 0.2 MPa  
Flow: 20 ℓ/min.(ANR)



### Flow feature

Primary pressure 0.7 MPa

