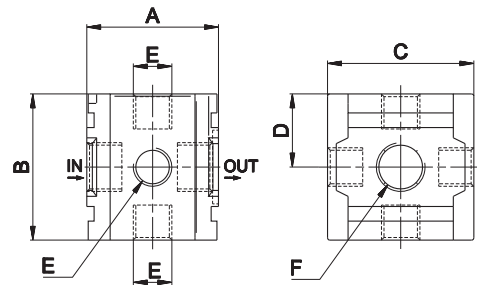


Threaded ports on each side. Possibility to assembly pressure switch.

Size	1	
Part no.	HZE1N10G	HZE1N15G
Threaded port (A)	G3/8	G1/2
Max inlet pressure (bar-MPa-psi)	10-1-145	
Fluid	compressed air	
Temperature (°C)	0 ÷ 60	
Weight (Kg)	0,23	

(A) = plug not included

HZE-N



Size	A	B	C	D	E	F
1	45	50	50	25	G1/4	G3/8-G1/2

> Ports

