

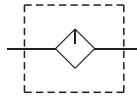
# MAL302 series

AIR UNIT (L.UNIT)



Option: MLF300

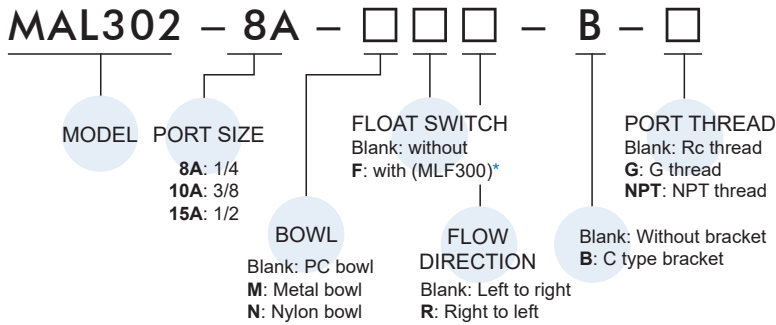
### Symbol



### Specification

Model	MAL302		
Bore No.	8A	10A	15A
Port size	1/4	3/8	1/2
Medium	Air		
Max. operating pressure	1 MPa		
Proof pressure	1.5 MPa		
Ambient temperature	- 5~+60°C (No freezing)		
Lubricating oil capacity	65 c.c		
Min. Flow for oil drip	50 ℓ/min	60 ℓ/min	
Recommended lubricating oil	Turbine oil ISO-VG32		
Weight	345 g		

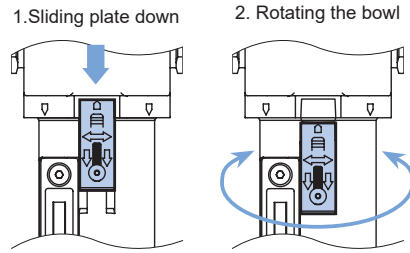
### Order example



### Caution

#### Metal bowl

Before assembling or disassembling, push the lock plate down to the end, and confirm that is detached from the body then rotate the bowl, otherwise the lock plate will be deformed or the body will be scratched.



\* The float switch (F) is only suitable for metal bowl (M).  
The specification please refer to page 4-\*\*.

### Option ccessories

#### C type bracket

