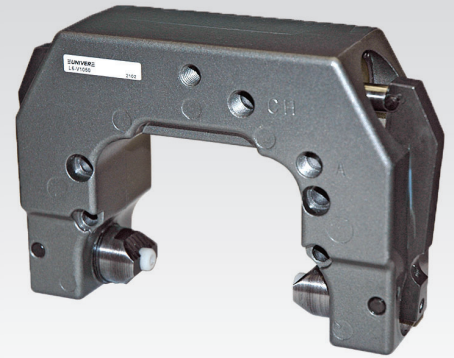


L6

Locking Units for rodless cylinders S5 - VL1

UNIVER Locking Units for rodless cylinders perform the function of keeping the carriage in any intended point of its stroke and allow high locking accuracy. They can be mounted on both sides of the carriage and the mechanical braking force can be further increased by means of an additional pneumatic override.



TECHNICAL CHARACTERISTICS

Ambient temperature	-20 ÷ 80 °C
Fluid	filtered air, with or without lubrication
Working pressure	4,5 ÷ 10 bar
Cylinder bore	Ø 25- 32- 40 - 50 mm

CONSTRUCTIVE CHARACTERISTICS

Body	die-cast aluminium
Seals	nitrile rubber (NBR)
Internal parts	brass/aluminium

CODIFICATION KEY

L	6	-	S	5	0	3	2
1				2			

1 Series

L6-S5 = Locking Units for S5 series rodless cylinder
L1-V1 = Locking Units for VL1 series rodless cylinder

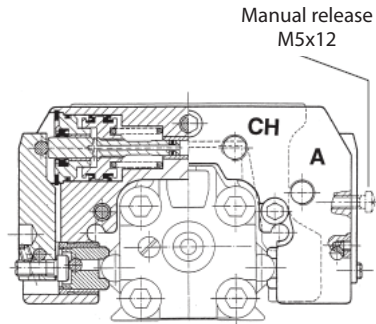
2 Cylinder bore (mm)

025 = Ø25
032 = Ø32
040 = Ø40
050 = Ø50

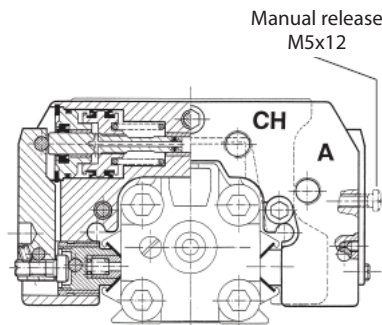
Main features:

- Min release pressure 4,5 bar
- Able to keep the carriage in position in both directions
- Easy installation, possible by both the carriage sides indifferently.
- Permanent manual release by tightening two M5 screws.
- Locking by means of mechanic springs acting over the carriage in event of lack of air pressure (A).
- To increase the locking force, this unit is ready for an additional pneumatic override (CH).

■ S5 series with L6 locking unit



■ VL1 series with L6 locking unit



2

Static locking force* (N)

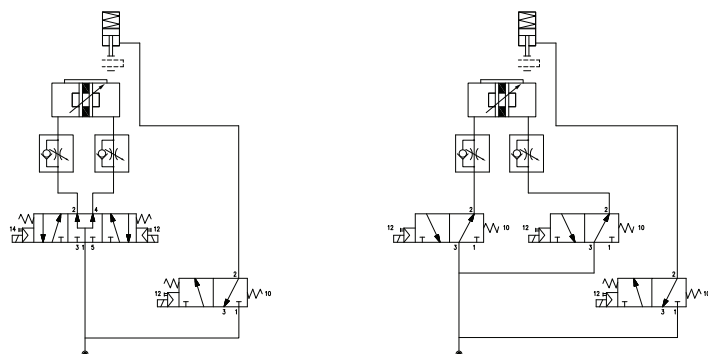
Ø	Force		A = CH
	Locking unit S5	Locking unit VL1	
25	810	520	M5
32	1185	745	G1/8
40	825	1465	G1/8
50	1235	2365	G1/8

* = Braking force is equivalent to 40% the static locking force
 A = Pneumatic release
 CH = Additional pneumatic override

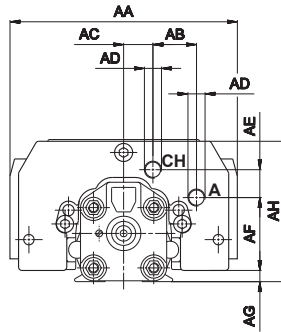
S5/VL1 mass

Ø	Locking unit S5		Locking unit VL1	
	g		g	
	Stroke 0	Part no.	Stroke 0	Part no.
25	350	L6-S5025	350	L6-V1025
32	460	L6-S5032	460	L6-V1032
40	820	L6-S5040	820	L6-V1040
50	1450	L6-S5050	1450	L6-V1050

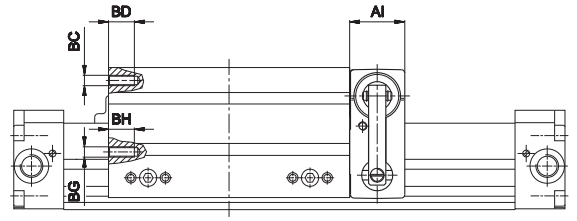
Scheme of working principle



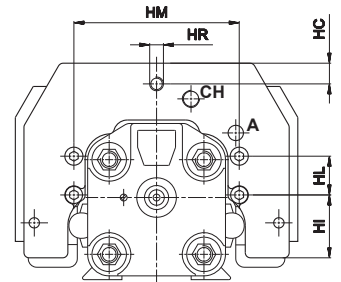
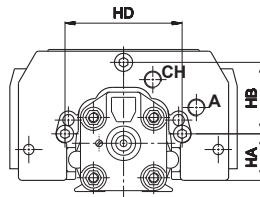
Locking unit for S5 series Ø 25 ÷ 50 mm



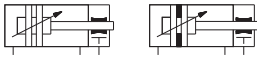
> Fixing Ø 25 - 32 - 40



> Fixing Ø 50

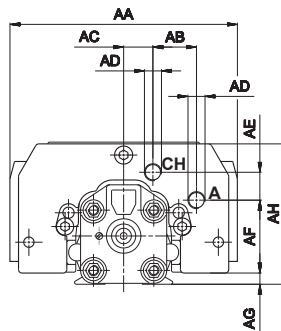
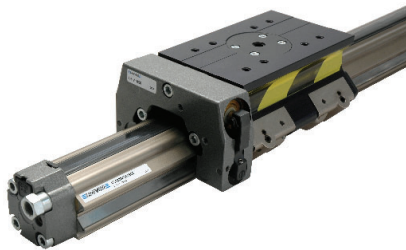


A = Pneumatic release
CH = Additional pneumatic override

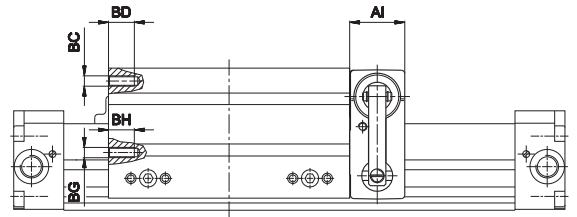


Ø	AA	AB	AC	AD	AE	AF	AG	AH	AI	BC	BD	BG	BH	HA	HB	HC	HD	HI	HL	HM	HR
25	120	24,5	12,5	M5	16,5	34,5	5	71,5	32	M6	15	M6	15	24,7	34,8	-	59,5	-	-	-	-
32	132	25,3	17	G1/8	16,2	42,3	6,5	81,5	32	M6	15	M6	15	27	41,5	-	68	-	-	-	-
40	150	26	17	G1/8	18,2	58,3	10	106	40	M6	15	M6	15	45,3	43,8	-	81,5	-	-	-	-
50	164	26	20	G1/8	19,8	72,5	12,7	125,7	51	M8	16	M6	15	-	-	12	-	36,5	22,5	96	M8x14

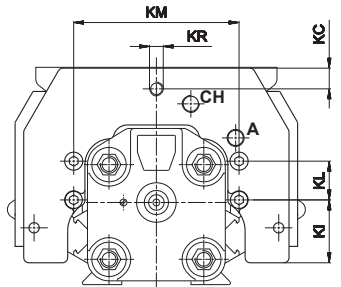
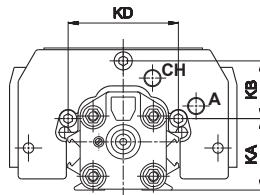
Locking unit for VL1 series Ø 25 ÷ 50 mm



> Fixing Ø 25 - 32 - 40



> Fixing Ø 50



A = Pneumatic release
CH = Additional pneumatic override

Ø	AA	AB	AC	AD	AE	AF	AG	AH	AI	BC	BD	BE	BF	KA	KB	KC	KD	KI	KL	KM	KR
25	120	24,5	12,5	M5	16,5	34,5	7,1	73,6	32	M6	10	M6	10	31,5	28	-	52	-	-	-	-
32	132	25,3	17	G1/8	16,2	42,3	6,5	81,5	32	M6	10	M6	10	35	33,5	-	64	-	-	-	-
40	150	26	17	G1/8	18,2	58,3	9	105	40	M6	15	M6	15	45,3	43,8	-	81,5	-	-	-	-
50	164	26	20	G1/8	19,8	72,5	12,7	125,7	51	-	-	M6	12	-	-	12	-	36,5	22,5	96	M8x14