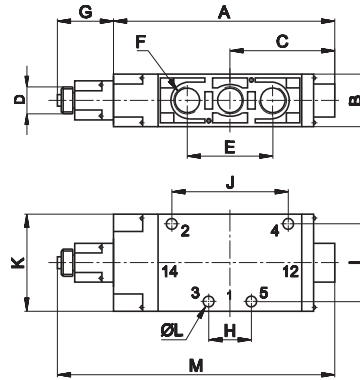


Indirect mechanical control for use with pneumatic, mechanical and manual actuators



1 = Supply port  
2 - 4 = Use  
3 - 5 = Exhaust  
14 = Control  
12 = Return



|   | G1/8  | G1/4  | G1/2  |
|---|-------|-------|-------|
| A | 99    | 114   | 163   |
| B | 25    | 27    | 40    |
| C | 47    | 54    | 83    |
| D | M14x1 | M14x1 | M14x1 |
| E | 36    | 44    | 80    |
| F | G1/8  | G1/4  | G1/2  |
| G | 27    | 27    | 27    |
| H | 18    | 22    | 40    |
| I | 26    | 40    | 50    |
| J | 36    | 60    | 108   |
| K | 40    | 50    | 63    |
| L | 4,5   | 5,5   | 6,5   |
| M | 126   | 141   | 190   |

5/2

| Symbol | Connection | Control      | Return                  | Pressure bar | Weight Kg | Part no. |
|--------|------------|--------------|-------------------------|--------------|-----------|----------|
|        | G1/8       |              |                         | 1,8÷10       | 0,27      | AC-7010  |
|        | G1/4       | ball pushrod | pneumomechanical spring | 2,3÷10       | 0,28      | AC-8010  |
|        | G1/2       |              |                         | 2÷10         | 0,33      | AC-9010  |

MANUAL ACTUATORS

|  |                           |                                      |  |  |
|--|---------------------------|--------------------------------------|--|--|
|  | Recessed button           | ■ BLACK<br>■ RED<br>■ GREEN          | AI-3511<br>AI-3512<br>AI-3513              |  |
|  | Head button               | ■ RED<br>■ BLACK<br>■ RED<br>■ BLACK | AI-3514<br>AI-3516<br>AI-3514D<br>AI-3516D |  |
|  | Button                    | ■ GREEN<br>■ RED<br>■ BLACK          | AI-3515<br>AI-3517<br>AI-3519              |  |
|  | Rotating selector         | ■ BLACK<br>■ BLACK                   | AI-3520<br>AI-3521                         |  |
|  | Rotating lever selector   | ■ BLACK<br>■ BLACK                   | AI-3522<br>AI-3523                         |  |
|  | Lever operator            | ■ BLACK                              | AI-3524                                    |  |
|  | Omni-directional operator | ■ BLACK                              | AI-3525                                    |  |
|  | Push-pull operator        | ■ BLACK                              | AI-3526                                    |  |

PNEUMATIC AND MECHANICAL ACTUATORS

|  |  |         |  |
|--|--|---------|--|
|  | Pneumatic actuator   | AI-3550 |  |
|  | Amplified pneumatic actuator   | AI-3551 |  |
|  | Roller operator 1 position   | AI-3560 |  |
|  | Ball-push operator 1 position  | AI-3562 |  |
|  | Operator with omni-directional antenna 1 position  | AI-3563 |  |
|  | Roller lever operator 1 position   | AI-3570 |  |
|  | Articulated roller lever operator 1 position<br>Complete actuation with stroke 2,5 mm, max stroke 4,7 mm | AI-3571 |  |
|  | Key operator 1 position  | AI-3572 |  |

For actuator dimensions refer to section "Accessories > Actuators and buttons"