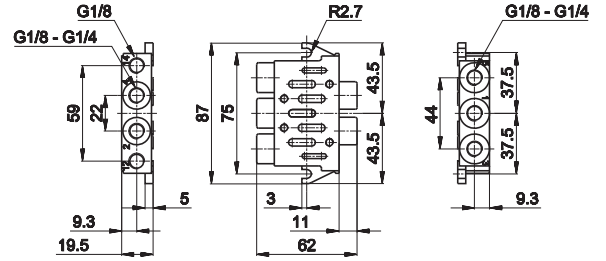


### ISO 1 - Single sub-base, side connections



Notes	Connection	Material	Weight Kg	Part no.
in line connections	G1/8	zamak	0,25	<b>BF-1060</b>
in line connections	G1/4	zamak	0,25	<b>BF-1061</b>

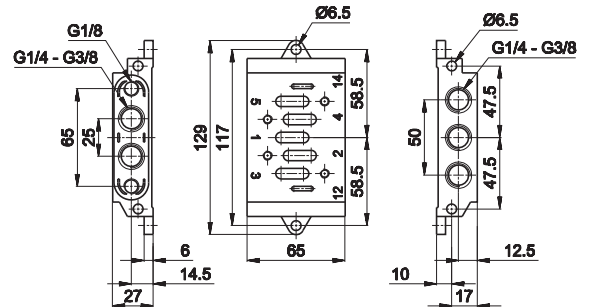


1 = Supply port      3 - 5 = Exhaust  
2 - 4 = Use          12 - 14 = Pilots

### ISO 2 - Single sub-base, side connections



Notes	Connection	Material	Weight Kg	Part no.
in line connections	G1/4	zamak	0,65	<b>BF-1150</b>
in line connections	G3/8	zamak	0,65	<b>BF-1151</b>



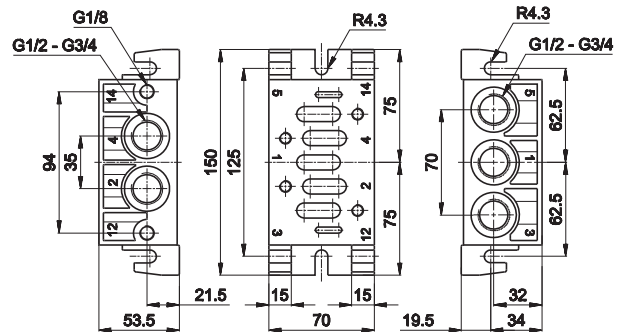
1 = Supply port      3 - 5 = Exhaust  
2 - 4 = Use          12 - 14 = Pilots

3

### ISO 3 - Single sub-base, side connections



Notes	Connection	Material	Weight Kg	Part no.
in line connections	G1/2	aluminium	0,74	<b>BF-3060</b>
in line connections	G3/4	aluminium	0,74	<b>BF-3061</b>

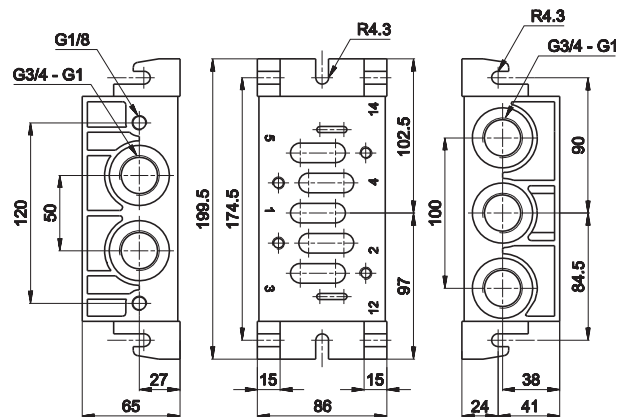


1 = Supply port      3 - 5 = Exhaust  
2 - 4 = Use          12 - 14 = Pilots

### ISO 4 - Single sub-base, side connections

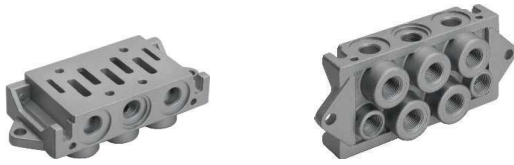


Notes	Connection	Material	Weight Kg	Part no.
in line connections	G3/4	aluminium	1,28	<b>BF-4060</b>
dorsal and side connections	G1	aluminium	1,28	<b>BF-4061</b>



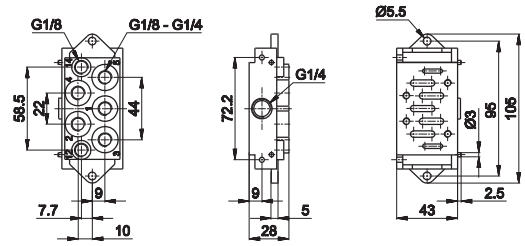
1 = Supply port      3 - 5 = Exhaust  
2 - 4 = Use          12 - 14 = Pilots

### ISO 1 - Single modular or Manifold sub-base, dorsal connections, separate exhausts



Notes	Connection	Material	Weight Kg	Part no.
dorsal connections	G1/8	zamak	0,35	<b>BF-1062</b>
dorsal connections	G1/4	zamak	0,33	<b>BF-1063</b>

Single assembly: close side ports (G1/8 - G1/4)  
 Manifold assembly with common inlet: close dorsal connections n.1  
 With incorporated screws and seal

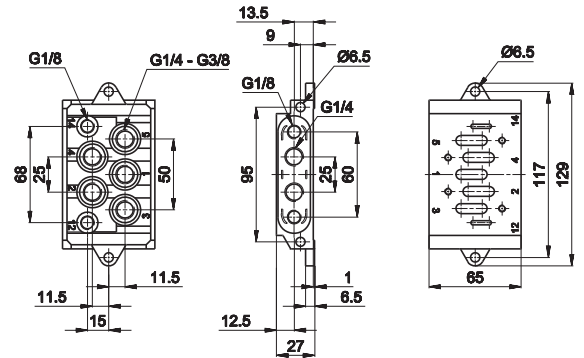


1 = Supply port      3 - 5 = Exhaust  
 2 - 4 = Use          12 - 14 = Pilots

### ISO 2 - Single sub-base, dorsal connections



Notes	Connection	Material	Weight Kg	Part no.
dorsal connections	G1/4	zamak	0,65	<b>BF-1152</b>
dorsal connections	G3/8	zamak	0,65	<b>BF-1153</b>

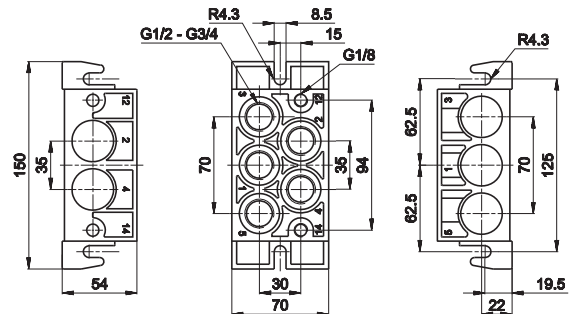


1 = Supply port      3 - 5 = Exhaust  
 2 - 4 = Use          12 - 14 = Pilots

### ISO 3 - Single sub-base, dorsal connections

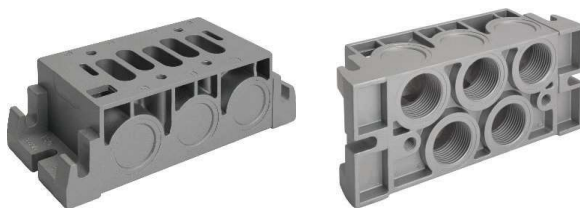


Notes	Connection	Material	Weight Kg	Part no.
dorsal connections	G3/4	aluminium	0,72	<b>BF-3063</b>

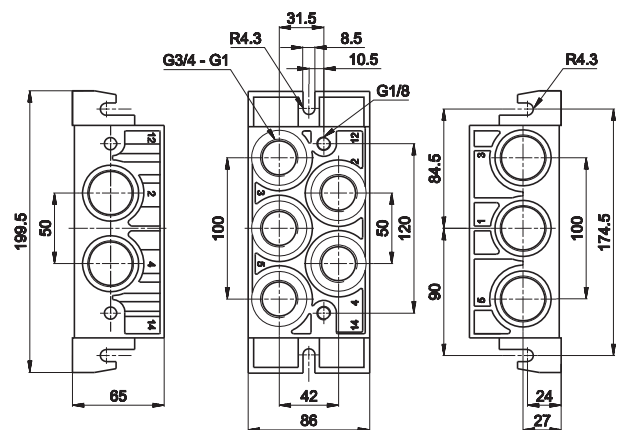


1 = Supply port      3 - 5 = Exhaust  
 2 - 4 = Use          12 - 14 = Pilots

### ISO 4 - Single sub-base, dorsal connections



Notes	Connection	Material	Weight Kg	Part no.
dorsal connections	G3/4	aluminium	1,24	<b>BF-4062</b>
dorsal connections	G1	aluminium	1,24	<b>BF-4063</b>



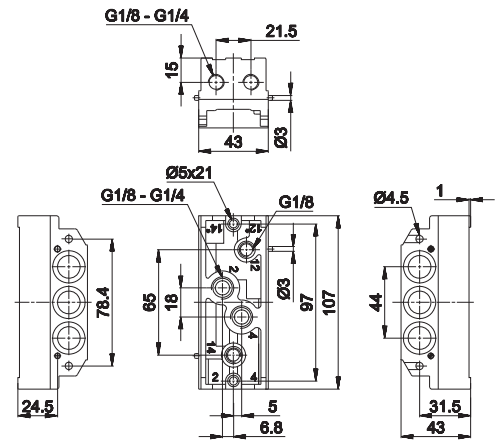
1 = Supply port      3 - 5 = Exhaust  
 2 - 4 = Use          12 - 14 = Pilots

### ISO 1 - Manifold universal system sub-base, dorsal and side connections, conveyed exhausts



Notes	Connection	Material	Weight	Part no.
			Kg	
dorsal and side connections	G1/8	aluminium	0,28	<b>BF-1071</b>
dorsal and side connections	G1/4	aluminium	0,28	<b>BF-1072</b>
side pneumatic impulses	G1/8	aluminium	0,30	<b>BF-1071S</b>
side pneumatic impulses	G1/4	aluminium	0,30	<b>BF-1072S</b>

Dorsal and side connections possible. Close unused ports with caps.  
With incorporated screws, seals and caps included



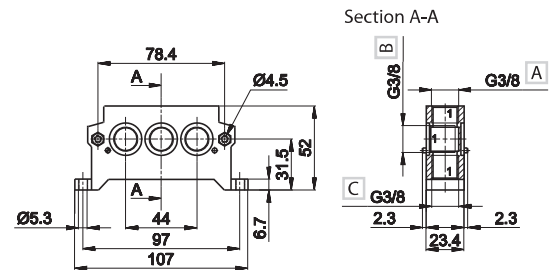
1 = Supply port  
2 - 4 = Use  
3 - 5 = Exhaust  
12 - 14 = Pilots  
12\* - 14\* = Side pilots

### ISO 1 - Manifold universal system inlet plate



- A On top connections
- B In line connections
- C Dorsal connetions

Notes	Connection	Material	Weight	Part no.
			Kg	
on top connections	G3/8	zamak	0,35	<b>BF-1065</b>
dorsal connections	G3/8	zamak	0,35	<b>BF-1066</b>



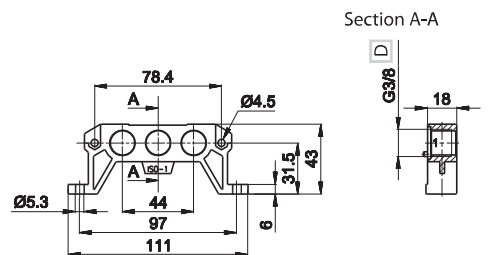
1 = Supply port  
3 - 5 = Exhaust



- D Only in line connections

Notes	Connection	Material	Weight	Part no.
			Kg	
only in line connections	G3/8	aluminium	0,12	<b>BF-1068</b>

When battery exceeds 4 units, the mounting of 2 plates is recommended  
Mixed version available upon request  
With incorporated screws and seal



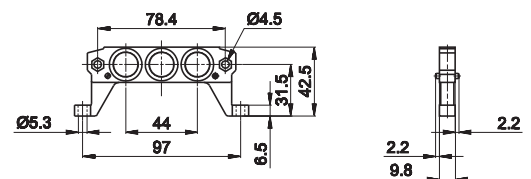
1 = Supply port  
3 - 5 = Exhaust

### ISO 1 - Manifold universal system diaphragm

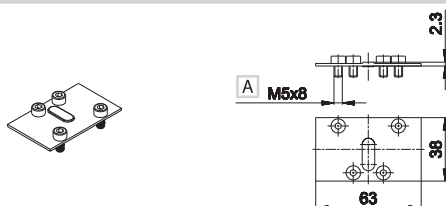


Notes	Connection	Material	Weight	Part no.
			Kg	
-	-	zamak	0,09	<b>BF-1070</b>

The diaphragm is not only the end plate of the manifold but it is also coupled with the exhaust regulator to separate two sub-bases and regulate the valves independently. In this case break the central blind hole.  
To get two or more pressures, break the two side blind holes.



### BF-1085



A ISO 4762

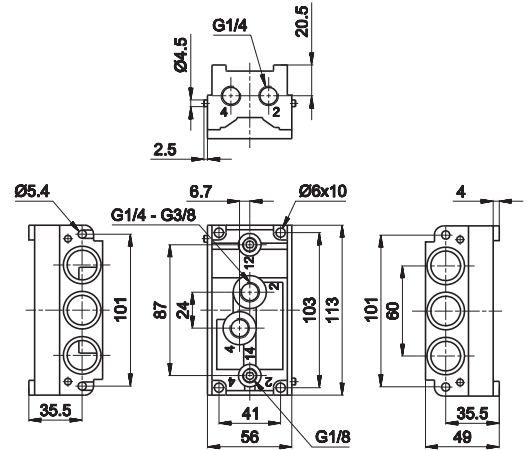
ISO 1 - Closing plate for sub-base 1  
material: steel  
weight: 0,03 Kg (for all sub-base versions)

### ISO 2 - Manifold universal system sub-base, dorsal and side connections, conveyed exhausts



Notes	Connection	Material	Weight Kg	Part no.
dorsal and side connections	G1/4	zamak	0,80	<b>BF-1160</b>
dorsal and side connections	G3/8	zamak	0,80	<b>BF-1161</b>

Dorsal and side connections possible. Close unused ports with caps.  
With incorporated screw, seals and caps included



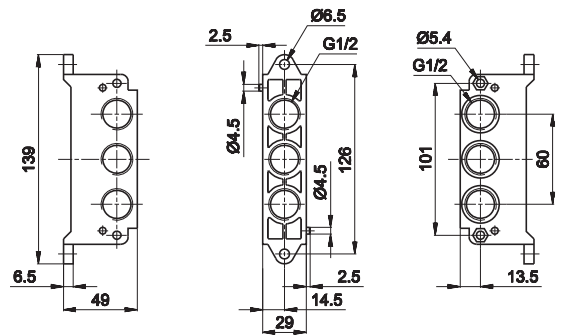
1 = Supply port                      3 - 5 = Exhaust  
2 - 4 = Use                              12 - 14 = Pilots

### ISO 2 - Manifold Universal system inlet plate



Notes	Connection	Material	Weight Kg	Part no.
in line connections	G1/2	zamak	0,46	<b>BF-1154</b>
dorsal connections	G1/2	zamak	0,46	<b>BF-1155</b>

When battery exceeds 4 units, the mounting of 2 plates is recommended  
Mixed version available upon request  
With incorporated screw and seals

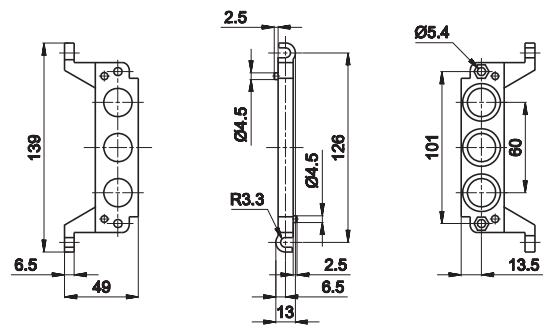


### ISO 2 - Manifold universal system diaphragm

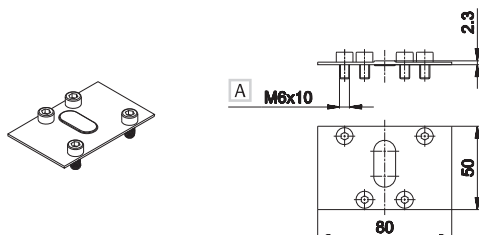


Notes	Connection	Weight Kg	Part no.	
-	-	zamak	0,16	<b>BF-1162</b>

The diaphragm is not only the end plate of the manifold but it is also coupled with the exhaust regulator to separate two sub-bases and regulate the valves independently. In this case break the central blind hole.  
To get two or more pressures, break the two side blind holes.



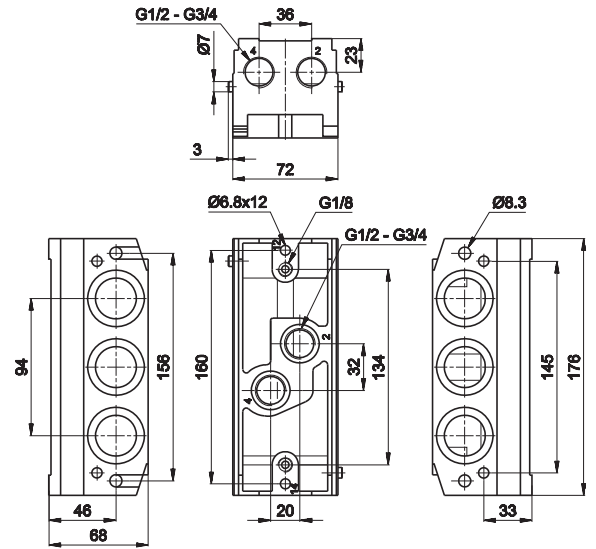
#### BF-1175



A ISO 4762

ISO 2 - Closing plate for sub-base 2  
material: steel  
weight: 0,05 Kg (for all sub-base versions)

**ISO 3 - Manifold universal system sub-base, dorsal and side connections, conveyed exhausts**

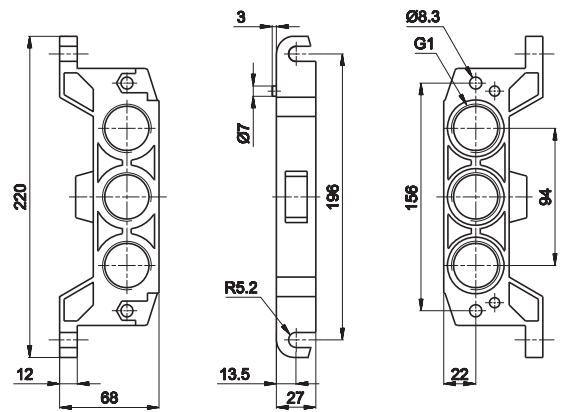


Notes	Connection	Material	Weight Kg	Part no.
dorsal and side connections	G1/2	aluminium	1,10	<b>BF-3071</b>
dorsal and side connections	G3/4	aluminium	1,10	<b>BF-3072</b>

Dorsal and side connections possible. Close unused ports with caps.  
With incorporated screws, seals and caps included

1 = Supply port      3 - 5 = Exhaust  
2 - 4 = Use          12 - 14 = Pilots

**ISO 3 - Manifold Universal system inlet plate**

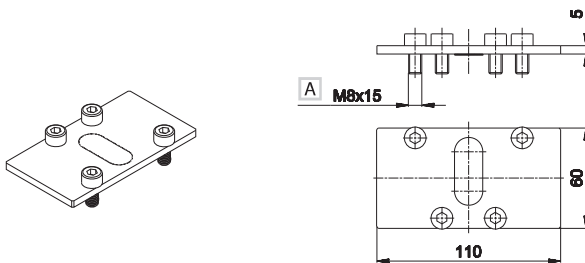


Notes	Connection	Material	Weight Kg	Part no.
in line connections	G1	aluminium	0,44	<b>BF-3064</b>

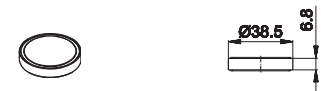
When battery exceeds 4 units, the mounting of 2 plates is recommended  
Mixed version available upon request  
With incorporated screws and seals

**BF-3175**

**BF-3082**



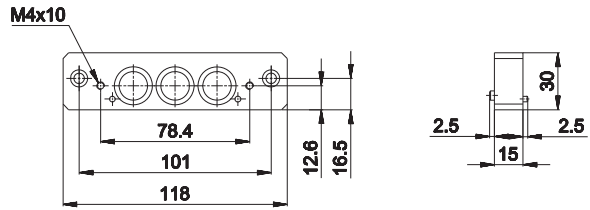
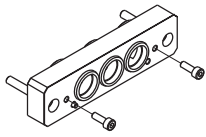
A ISO 4762



**ISO 3 - Closing plate for sub-base 3**  
material: steel  
weight: 0,08 Kg (for all sub-base versions)

**ISO 3 - Universal system Cap**  
material: steel  
weight: 0,20 Kg  
To be used to reach two pressures

**BF-1190**

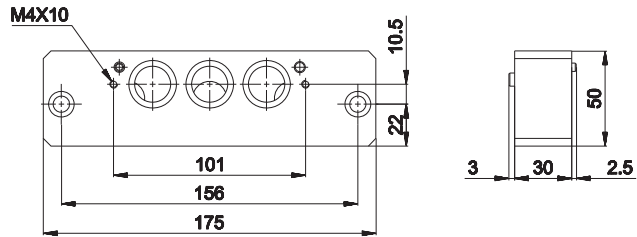
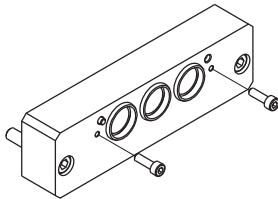


**Connecting interface for universal sub-bases size 1 and 2**

material: steel  
weight: 0,11 Kg

It allows the use of size 1 and 2 valves in one manifold with conveyed pressure and exhausts. (Upon request: pressure and/or exhausts separated)

**BF-3190**

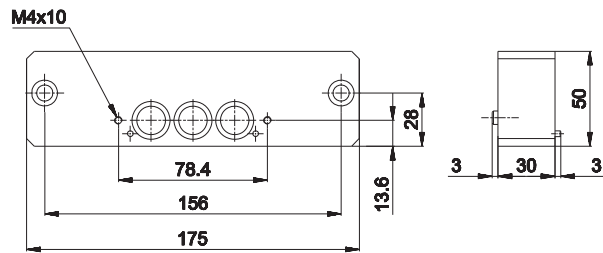
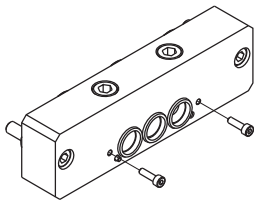


**Connecting interface for universal sub-bases size 2 and 3**

material: steel  
weight: 0,57 Kg

It allows the use of size 2 and 3 valves in one manifold with conveyed pressure and exhausts. (Upon request: pressure and/or exhausts separated)

**BF-3191**



**Connecting interface for universal sub-bases size 1 and 3**

material: steel  
weight: 0,57 Kg

It allows the use of size 1 and 3 valves in one manifold with conveyed pressure and exhausts. (Upon request: pressure and/or exhausts separated)